

Three types of Work-Based Learning

Three types of Work-Based Learning

- Youth Apprenticeship- a program which emphasizes placements in skilled career oriented occupations in order to provide Georgia with a pool of highly trained sophisticated workers. Students can work as many as three blocks per semester in their field of study. A postsecondary commitment related to their career interest and placement is required from each student.
- Internship- students can work either paid or unpaid at their job site where careers and future options can be explored.
- Employability Skills Development- ESD students can be employed at a work-site which may or may not be career related or linked to a specific career pathway. Students' work experience and training plan concentrate heavily on skills and knowledge that are important to success on the job.

Benefits of Work-Based Learning Employers

- Offers a source of skilled and motivated workers
- Provides an opportunity to prepare and train future employees
- Reduces the cost of recruitment and training
- Improves employee retention
- Increases employee visibility in educational community
- Support from WBL Coordinators



For Students

- Increases motivation by showing the relevance between school and work
- Provides opportunities to explore possible career pathways
- Gives a realistic view of specific careers
- Helps to develop workplace responsibility, positive attitudes, and habits
- Offers opportunities for leadership development
- Allows for interaction with adults in a work-based setting encourages the pursuit of education after high school

Requirements for Admission

- Parental approval
- Enrollment in an appropriate technology / career course which relates to your career objective
- Good attendance record
- Good academic record
- Good discipline record
- Reliable transportation
- Must be a junior or senior and must be at least 16 years of age
- Good attitude
- Completion of Work-Based Learning Application



General Information

Any 11th or 12th Grader at Northwest Whitfield, Southeast Whitfield, or the Whitfield County Career Academy can participate in a Work-Based learning Program provided they meet the program requirements. Academic credits are awarded for successful completion of WBL classes.

Career Pathways available within the Whitfield County School System

- Adventure Based Travel & Tourism
- Agriculture
- Art 2-D / 3-D
- Computer Programming
- Construction Trades
- Cosmetology
- Culinary Arts
- Creative Writing / Journalism
- Digital Media
- Education & teaching
- Early Childhood Education
- Electronics
- Engineering, Drawing & Design
- Financial Management
- Heating & Air Cond.
- Interactive Media
- Government & Public Safety
- Graphic Communications
- Manufacturing
- Marketing, Management, & Event Planning
- Medical Services / Nursing
- Metals / Welding
- Small Business Development
- Transportation Logistical Operations / Support

Employer Responsibilities

- Provide a mentor for the student
- Follow a defined training plan
- Pay at least minimum wage and on a progressive scale
- Adhere to the minimum hours of work required by the program based on the student's needs
- Assess student's performance in a timely manner
- We encourage employers to contact one of our Work-Based Learning Coordinators if they are interested in becoming a partner.



Equal Opportunity Statement

The Whitfield County School System is committed to equal opportunity and nondiscrimination in all programs and services, and does not discriminate on the basis of race/ethnicity, color, religion, sex, including marital status, national origin, ancestry, age, sexual orientation, disability, or veteran status.

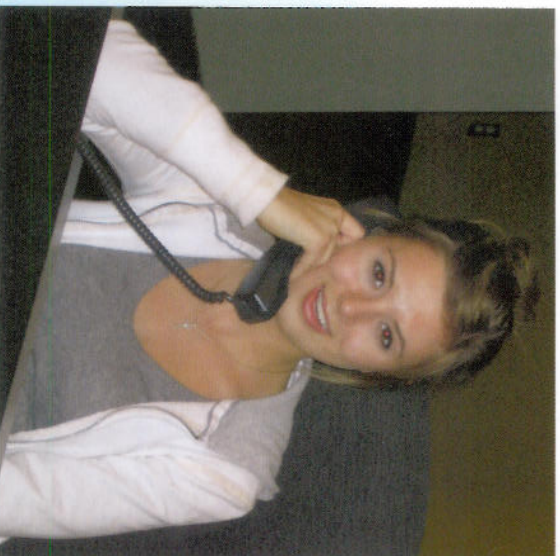
Partial List of Employers

- Hamilton Medical Center ● SRT Machinery
- Whitfield County District Attorney's Office
- McCamey Law Firm ● S & W Pharmacy
- Shaw Industries ● The Sunshine House
- Brown Printing ● Professional Pharmacy
- Dalton Family Practice ● Dalton Utilities
- Hobby Lobby ● Kim Woods Construction
- The Farm ● Dalton Country Club ● Automat
- Oakwood Café ● Niche Custom Flooring
- Wal-Mart ● Teems Fabrication ● Kroger's



Rising Professionals

This seminar for all WBL students provides instruction in many of the "soft skills" necessary for success in the workplace. Conflict resolution, work ethics, proper dress and behavior, and other common skills that benefit us all in a work environment are addressed in these seminars. Melinda Scrivner, from Hamilton Medical Center's Human Resources Department assist in the delivery of these seminars which take place each semester & have the potential to be an attractive tool in the development desirable work place habits for our students.

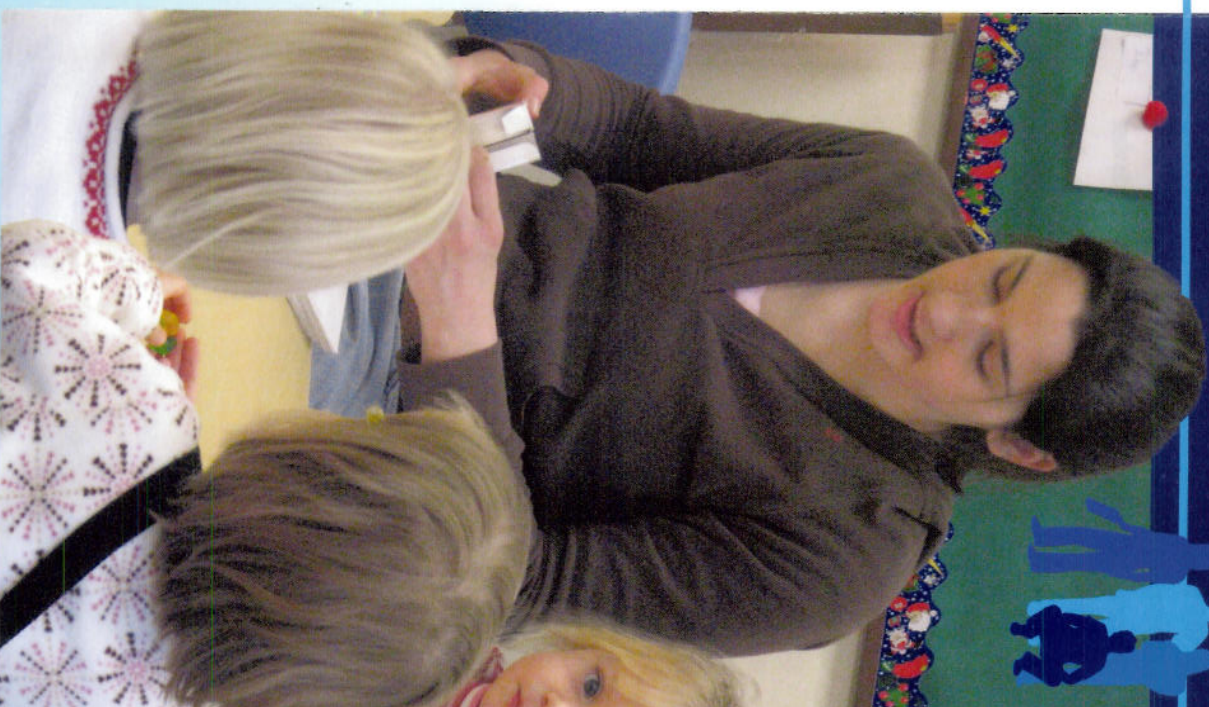


Whitfield County Schools Work-Based Learning

Information Coordinators:

Larry Tripp Ed.D. ltripp@whitfield.k12.ga.us
706-876-3600
Jeff Storey Ed.S. jstorey@whitfield.k12.ga.us
706-673-3454 or 706-876-3600

WHITFIELD COUNTY SCHOOLS
WORK-BASED LEARNING PROGRAM
Focus On The Future



Our Mission